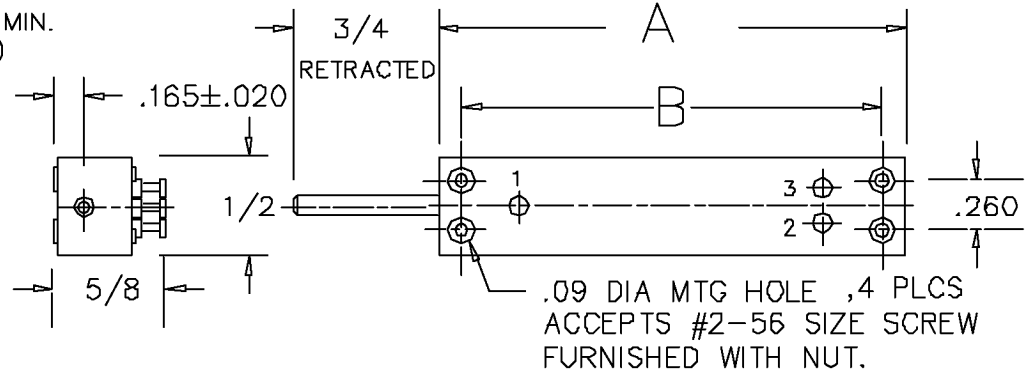


THIS DOCUMENT CONTAINS PROPRIETARY DATA OF POLARIS INDUSTRIAL ENTERPRISES, INC. NO DISCLOSURE, REPRODUCTION, OR USE OF ANY PART THERE OF MAY BE MADE EXCEPT BY WRITTEN PERMISSION.

REV.	BY	DATE	APPRVL.	REV. NOTE:	P/N	LCP12
M	BT	03/27/00		ADDED NOTE:		

SPECIFICATIONS

RESOLUTION -----	INFINITE
OUTPUT SMOOTHNESS -----	LESS THAN 0.1% INPUT VOLTAGE
CONTACT RESIST. VARIATION-----	LESS THAN 2%
DIELECTRIC STRENGTH -----	500 VAC MIN.
INSULATION RESISTANCE -----	1000 MEGOHMS AT 500 VDC MIN.
FRICTION -----	1.8 oz. (3.6 oz FOR LCP12-100)
STOP STRENGTH -----	20 OZ. MIN..
RESISTANCE TEMPCO -----	±400 PPM/°C
WEIGHT -----	10 TO 35 GRAMS
LIFE EXPECTANCY -----	20 MILLION STROKES

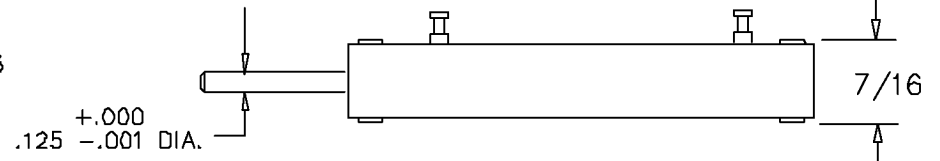
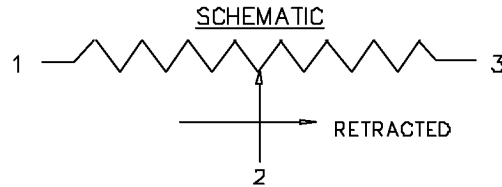


MATERIALS

BODY -----	ALUMINUM(BLACK ANODIZE)
LID -----	HIGH TEMP. PLASTIC
SHAFT -----	STAINLESS STEEL
TERMINALS -----	BRASS GOLD PLATED
RESISTANCE ELEMENT -----	CONDUCTIVE PLASTIC

OPTIONS AVAILABLE

- SPECIAL ENDED SHAFTS
- SPECIAL RESISTANCE VALUES
- SPECIAL LINEARITY
- NON STANDARD STROKES
- SPRING RETURNS



MODEL NO'S.

SHAFT STYLES

LCP12P-(STROKE)-(RES.)	(P)		PLAIN
LCP12A - " "	(A)		#4-40 THREAD
LCP12B - " "	(B)		#5-40 THREAD
LCP12C - " "	(C)		CHAMFERED 0.030" DIA. X 45°
LCP12S - " "	(S)		SPRING RETURN
LCP12S-76 OR -100 (RES)		RETRACTED LENGTH OF SHAFT TO BE 1 1/4" FOR 3" & 4" STROKE SPRING RETURN.	

NOTE: FOR SPRING RETURN WITH THREAD, SEE DWG. LCP12ST

MODEL NO.	LCP12-12	LCP12-25	LCP12-50	LCP12-76	LCP12-100
STD.RESIS.VALUES	500,1K,2K 5K,10K	500,1K,2K 5K,10K	500,1K,2K 5K,10K,20K	1K,2K,5K 10K,20K	1K,2K,5K 10K,20K
RESISTANCE TOL.	±20%	±20%	±20%	±20%	±20%
LINEARITY (IND.)	±1.5%	±1.0%	±0.7%	±0.5%	±0.5%
POWER RATING	0.2 WATT	0.4 WATT	0.7 WATT	1.2 WATT	1.2 WATT
STROKE MECH ±.1-.0	1/2"	1"	2"	3"	4"
STROKE ELECT ±.02					
'A' DIM ±0.04	1.50	2.00	3.00	4.00	5.00
'B' DIM ±0.02	1.26	1.77	2.75	3.76	4.76

TOLERANCES
 XX = +/- .010" FRACT. = +/- 1/64"
 XXX = +/- .005" ANGLES = +/- 1/2"
 ALL SPECIFICATIONS SUBJECT TO CHANGE WITHOUT NOTICE.

SCALE	DATE: 3-29-86
NONE	BY
CODE	APPRV'D BT
IDENT: 19477	



TITLE
 LINEAR MOTION
 POTENTIOMETER

PART NO.
 LCP12