



# **AV TECHNOLOGY OVERVIEW**

**Conference & Event Spaces**

**Center of Excellence in Bioinformatics & Life Sciences**

**701 Ellicott St. Buffalo, NY 14203 (716) 881-8900**

Center of Excellence in Bioinformatics and Life Sciences  
Conference Room Technology Overview

---

Technology Summary.....	3
Wireless Presentation.....	4
Digital Signage.....	5
Event Overflow .....	6
Music.....	7
Phones.....	8
Built-In Computers .....	9
Press Coverage.....	10
B1-303: Side Lobby Area .....	11
B1-304: Small Conference Room .....	12
B1-305: Small Conference Room .....	13
B1-306: Large Conference Room .....	14
B1-307: Small Conference Room .....	15
B1-308: Small Conference Room .....	16
B2-203: Concierge Desk .....	17
B2-205: Event Space .....	18
B2-209: Small Conference Room .....	19
B2-210: Collaboration Area.....	20
B2-211: Small Conference Room .....	21
B2-214: Large Conference Room .....	22
B2-228: Collaboration Area (Secure Area).....	23
B2-280 and B2-283-Second Floor Kitchen .....	24
B2-284: Huddle/Side Kitchen Area .....	25
B2-285: Bridge/Event Overflow .....	26
B2-291: Small Conference Room .....	27
B2-292: Small Conference Room .....	28
B2-294: Small Conference Room .....	29
B3-301: Large Conference Room .....	30
B4-301: Large Conference Room .....	31

## Technology Summary

The CBLS is equipped with some of the university's most advanced and flexible technology for engaging presentations and video conferencing.

Features 17 fully equipped conference rooms plus glass enclosed, private event space all with wired & wireless presentation capabilities as well platform agnostic video conferencing (which means you can run Zoom, Microsoft Teams, Cisco WebEx, etc.)

Spaces range from open collaboration areas, to small meeting rooms, to traditional conference rooms up to the event space.

- Rooms are designed to be easy and plug and play.
- The spaces feature one of two types of displays: either projector or wall-mounted displays.
- Conference room capacity ranges from 4-30 people (not including event space).
- Each floor features one large conference room (20-30 people max) that has a built-in computer
- Event Space:
  - Capable of multiple layouts and various capacities
    - Chairs only: Approx. 150
    - Tables & Chairs: 16 tables with capacity of 64 (plus extra chairs to use on sides of room)
  - Event overflow spaces in the kitchen and bridge area that can accommodate an additional ~75 people standing.
  - The event space also has all the standard conference room features with a built in-computer.
  - Production quality camera and microphones (built-in & portable) are available in the event space to meet your recording, live streaming or press needs.
  - Concierge Desk outside the event space is available for pre-event check-ins/set-up.
- The CBLS does not have onsite AV/IT support. Please follow the guides to utilize the equipment. CBLS Operations team will try to assist when possible. If the equipment in the room is broken, please contact the Reception Desk at 881-8900.
- All rooms can be booked electronically or by calling the reception desk.

## Wireless Presentation

### Description

All conference rooms and huddle spaces are equipped with Mersive Solstice Pod (wireless)s for wireless presentation. Up to four participants can present content simultaneously.

### Available To

Wireless presentation is only available to those with a valid UBITname capable of joining the UB\_Secure or Eduroam Wi-Fi networks.

### Alternatives

1. All locations except for B2-283 and B2-285 allow wired presentation via HDMI
2. Built-in computers are available in B1-306, B2-205, B2-214, B3-301, and B4-301

### Additional Information & Capabilities

Visit <https://www.mersive.com/go>

## Digital Signage

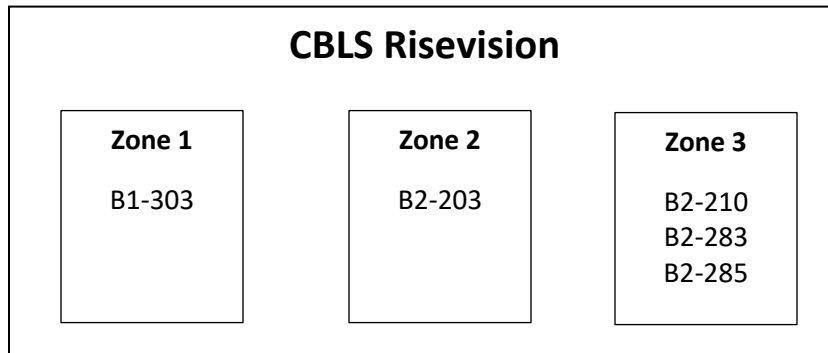
### Description

Risevision digital signage is available in the following spaces

1. B1-303
2. B2-203
3. B2-210
4. B2-283
5. B2-285

### Functionality

Three zones are available for digital signage.



Displays within a zone display the same digital signage however it is possible to use the spaces for different functions. For example, B2-210 can be used for overflow while B2-283 and B2-285 can be used for digital signage.

**Note:** Digital Signage content is controlled by CBLS Ops/Marketing Teams

## Event Overflow

### Description

Event overflow areas is available in the following spaces:

1. B2-210
2. B2-284
3. B2-285

### Functionality

Audio and projected content from the Event Space can be viewed from at the locations above once the broadcasting option has been selected on the touch panel in the Event Space or concierge desk.

## Music

### Description

Pandora is available in the following spaces

1. Second Floor Bridge and Kitchenette

### Functionality

Pandora Business is available in the above locations. Different music can be played on each floor. Music and Schedules can be controlled from a website by the CBLS Operations Team.

## Phones

### Description

Physical phones will be available for traditional calling in all spaces except:

- B2-205 (Event Space)
- B2-210 (Collaboration Area)
- B2-228 (Collaboration Area in Secure Tenant Area)

### Functionality

Conference calls can be made with up to 6 participants.

### Making a conference call

1. While on a call, press the Conference key
2. Dial the second party's number
3. When the party answers, press the Conference key again
4. Repeat to establish up to six callers

### Event Space and Large Conference Rooms

Spaces with a built-in computer have Cisco Jabber installed and automatically signed in. Anyone using the space will be able to use Jabber and the room microphones to place a phone call.

1. Open Cisco Jabber
2. Type the person's phone number in the Search field
3. Click the Call button, which is a round green button with a telephone handset on it next to the Search field

\* As an alternative to using Jabber the meeting host can use their software of choice (Zoom, Webex, etc) to create a meeting with a dial-in conference number



## Built-In Computers

### Description

Built-in computers will be available in the following spaces. Users of the space will not need to bring their own device in order to present.

- B1-306
- B2-205
- B2-214
- B3-301
- B4-301

### Functionality

Computers in the space will have the standard UB software installed including Microsoft Office and popular conferencing software such as Webex and Zoom. The computer automatically signs in to a generic account. A wireless keyboard and mouse are available in each room. A USB port to connect a flashdrive is available at the front of the room in the Event Space and in the cable cubby on the table in the conference rooms. Users can use a web browser to access their email or file sharing service to retrieve a presentation.

**NOTE:** The built-in computer must be used for video conferencing in order to use the room cameras.

## Press Coverage

### Description

The event space is equipped with audio feeds that the press can access in the AV room. Audio will be captured from the existing microphones in the event space.

### Functionality

UB Special Events must be engaged in order to use the press coverage capabilities.

## B1-303: Side Lobby Area



### Description

Digital Signage and café bar style seating and lounge chairs

### Capabilities

Independently controlled content

### Equipment

- 75" Display
- Risevision player for digital signage only

## B1-304: Small Conference Room



### Description

Small conference room; seats 10 people

### Capabilities

- Wired and wireless presentation
- Video Conferencing
- Phone

### Equipment

- 75" Display
- Cisco Phone
- Logitech Meetup Video Conferencing Camera on Display
- Mersive Solstice Pod (wireless) (wireless)
- HDMI input

### User Requirements

- Must bring your own laptop and adaptors if needed

## B1-305: Small Conference Room



### Description

Small conference room; seats 10 people

### Capabilities

- Wired and wireless presentation
- Video Conferencing
- Phone

### Equipment

- 75" Display
- Cisco Phone
- Logitech Meetup Video Conferencing Camera on Display
- Mersive Solstice Pod (wireless)
- HDMI input

### User Requirements

- Must bring your own laptop and adaptors if needed

## B1-306: Large Conference Room



### Description

Large conference room; seats 18 people at table plus 6 additional chairs

### Capabilities

- Built-in computer (Required for video conferencing)
- Wired and wireless presentation
- Video Conferencing
- Phone

### Equipment

- Laser Projector in Ceiling
- Cisco Conference Phone
- Built-in Vaddio RoboSHOT 4K camera
- Table microphones
- Mersive Solstice Pod (wireless)
- HDMI input



## B1-307: Small Conference Room



### Description

Small conference room with movable furniture, seats 8 people

### Capabilities

- Wired and wireless presentation
- Video Conferencing
- Phone

### Equipment

- 75" Display
- Cisco Phone
- Logitech Meetup Video Conferencing Camera on Display
- Mersive Solstice Pod (wireless)
- HDMI input

### User Requirements

- Must bring your own laptop and adaptors if needed

## B1-308: Small Conference Room



### Description

Small conference room with café height standing table and two bistro café height tables; seats 12 people

### Capabilities

- Wired and wireless presentation
- Video Conferencing
- Phone

### Equipment

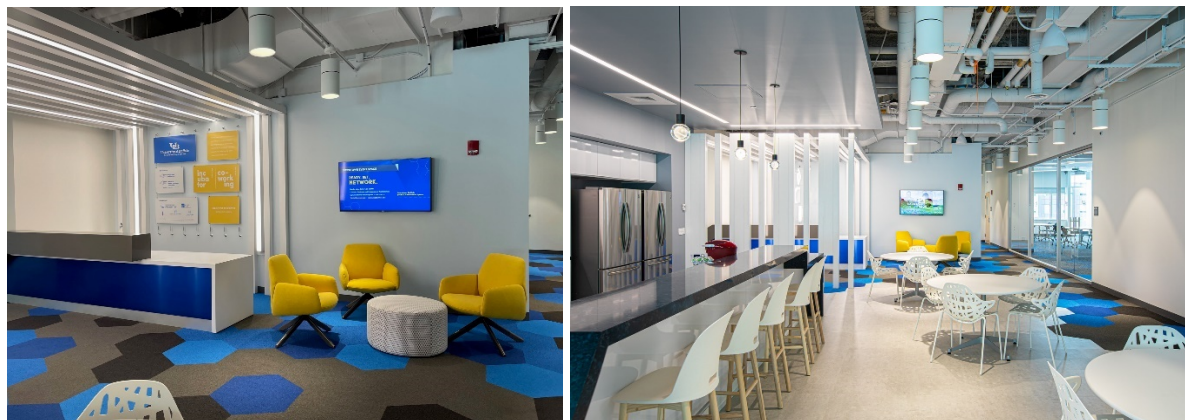
- 75" Display
- Cisco Phone
- Logitech Meetup Video Conferencing Camera on Display
- Mersive Solstice Pod (wireless)
- HDMI input

### User Requirements

- Must bring your own laptop and adaptors if needed



## B2-203: Concierge Desk



### Description

Concierge Digital Signage

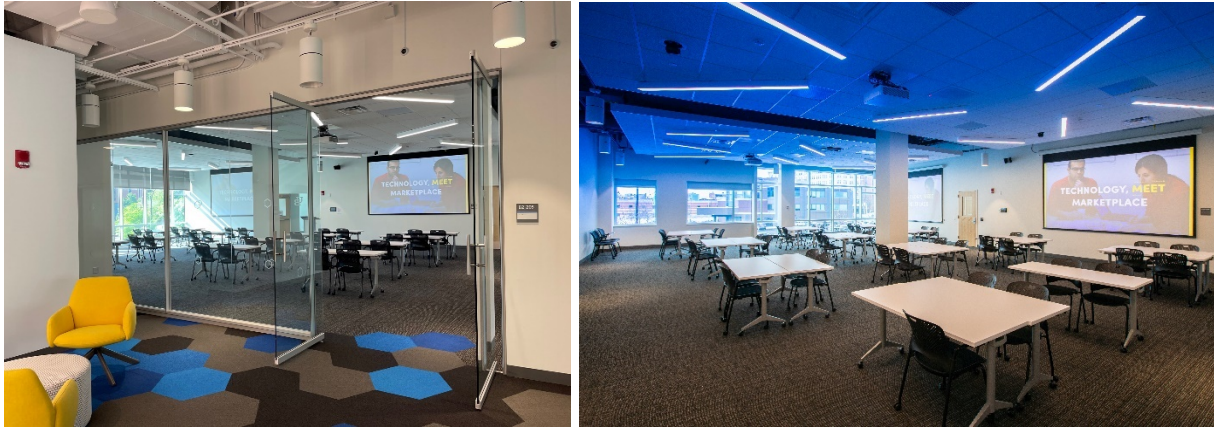
### Capabilities

Independently controlled content by CBLS Operations

### Equipment

- 55" Display
- Risevision player

## B2-205: Event Space



### Description

- Event Space (Flexible space with multiple configurations)
- Chairs-150 People
- Tables with Chairs-60 people with additional chairs spread around the room
- Event Overflow available to accommodate additional people in the nearby kitchen/bridge areas

### Capabilities

- Built-in computer
- Wired and wireless presentation
- Video Conferencing
- Phone conferencing using Cisco Jabber installed on built-in computer

### Equipment

- 2- Crestron Control Panel – available in front of room and a panel located at concierge desk
- 2- Laser Projector screens
- 2- Vaddio RoboSHOT 4K camera (installed in ceiling)
- Wireless microphones – Located at concierge and limited to 8 at a time (either hand held & lapels or table top but not all three together)
  - a. 4 Handheld – floor and table stands available
  - b. 2 Lapel
  - c. 8 Tabletop
- Ceiling microphone array
- Mersive Solstice Pod (wireless)
- HDMI input
- Wireless keyboard and mouse
- USB input for flashdrive (installed on wall near control panel)

## B2-209: Small Conference Room



### Description

Small conference room with movable furniture (adjacent to event space); seats 10 people

### Capabilities

- Wired and wireless presentation
- Video Conferencing
- Phone

### Equipment

- 75" Display
- Cisco Phone
- Logitech Meetup Video Conferencing Camera on Display
- Mersive Solstice Pod (wireless)
- HDMI input

### User Requirements

- Must bring your own laptop and adaptors if needed

## B2-210: Collaboration Area



### Description

Collaboration Area and Event Overflow also available for guests and open co-working

### Capabilities

- Event Space Overflow
- Digital Signage - Same content as B2-284 and B2-285
- Wireless presentation

### Equipment

- 75" Display
- Mersive Solstice Pod (wireless)

### User Requirements

- Must bring your own laptop and adaptors if needed



## B2-211: Small Conference Room



### Description

Small conference room, seats 4 people

### Capabilities

- Wired and wireless presentation
- Video Conferencing
- Phone

### Equipment

- 43" Display
- Cisco Phone
- Logitech Meetup Video Conferencing Camera on Display
- Mersive Solstice Pod (wireless)
- HDMI input

### User Requirements

- Must bring your own laptop and adaptors if needed

## B2-214: Large Conference Room



### Description

Large conference room; seats 16 people

### Capabilities

- Built-in computer
- Wired and wireless presentation
- Video Conferencing
- Phone

### Equipment

- Laser Projector & Screen
- Cisco Conference Phone
- Built-in Vaddio RoboSHOT 4K camera
- Table microphones
- Mersive Solstice Pod (wireless)
- HDMI input
- USB input for flashdrive

## B2-228: Collaboration Area (Secure Area)



### Description

Collaboration Area in secure tenant area (badge access required)

### Capabilities

- Wired and wireless presentation
- Video Conferencing

### Equipment

- 75" Display
- Logitech Meetup Video Conferencing Camera on Display
- Mersive Solstice Pod (wireless)
- HDMI input

### User Requirements

- Must bring your own laptop and adaptors if needed

## B2-280 and B2-283-Second Floor Kitchen



### Description

Shared Kitchen Area (not private but available for use with event space); also available for guests and open co-working

### Capabilities

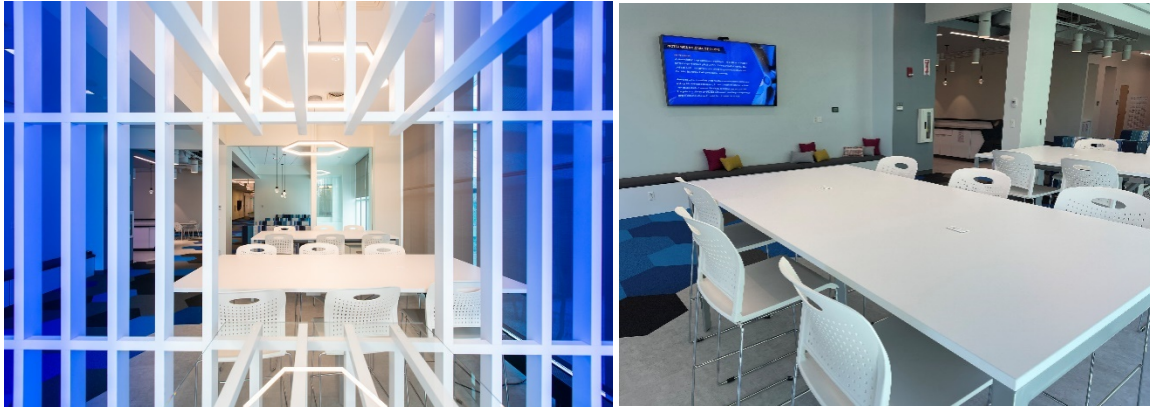
Music – Mute is available independently for the Bridge and Kitchen areas.

### Equipment

- Pandora Player (located in AV closet)



## B2-284: Huddle/Side Kitchen Area



### Description

Huddle Space and Event Overflow; also available for guests and open co-working; seats 12 people

### Capabilities

- Event Space Overflow
- Digital Signage - Same content as B2-210 and B2-285
- Wireless presentation

### Equipment

- 75" Display
- Mersive Solstice Pod (wireless)

### User Requirements

- Must bring your own laptop and adaptors if needed

## B2-285: Bridge/Event Overflow



### Description

Huddle Space and Event Overflow; also available for guests and open co-working

### Capabilities

- Event Space Overflow
- Digital Signage - Same content as B2-210 and B2-284
- Wireless presentation

### Equipment

- 75" Display
- Mersive Solstice Pod (wireless)

### User Requirements

- Must bring your own laptop and adaptors if needed

## B2-291: Small Conference Room



### Description

Small conference room with movable furniture; seats 6 people

### Capabilities

- Wired and wireless presentation
- Video Conferencing
- Phone

### Equipment

- 55" Display
- Cisco Phone
- Logitech Meetup Video Conferencing Camera on Display
- Mersive Solstice Pod (wireless)
- HDMI input

### User Requirements

- Must bring your own laptop and adaptors if needed

## B2-292: Small Conference Room



### Description

Small conference room with café height standing table. seats 6 people

### Capabilities

- Wired and wireless presentation
- Video Conferencing
- Phone

### Equipment

- 43" Display
- Cisco Phone
- Logitech Meetup Video Conferencing Camera on Display
- Mersive Solstice Pod (wireless)
- HDMI input

### User Requirements

- Must bring your own laptop and adaptors if needed



## B2-294: Small Conference Room



### Description

Small conference room; seats 4 people

### Capabilities

- Wired and wireless presentation
- Video Conferencing

### Equipment

- 43" Display
- Logitech Meetup Video Conferencing Camera on Display
- Mersive Solstice Pod (wireless)
- HDMI input

### User Requirements

- Must bring your own laptop and adaptors if needed

## B3-301: Large Conference Room



### Description

Large conference room with glass atrium; seats 12 people

### Capabilities

- Built-in computer
- Wired and wireless presentation
- Video Conferencing
- Phone

### Equipment

- Laser Projector
- Cisco Phone
- Built-in Vaddio RoboSHOT 4K camera
- Table microphones
- Mersive Solstice Pod (wireless)
- HDMI input
- USB input for flashdrive

## B4-301: Large Conference Room



### Description

Large conference room; seats 10 people plus extra chairs in the room

### Capabilities

- Built-in computer
- Wired and wireless presentation
- Video Conferencing
- Phone

### Equipment

- Laser Projector
- Cisco Phone
- Built-in Vaddio RoboSHOT 4K camera
- Table microphones
- Mersive Solstice Pod (wireless)
- HDMI input
- USB input for flashdrive