



67°

Atlanta Partly Cloudy

Weather Alerts School Closings

Articles Video Web Yes

HOME NEWS VIDEO WEATHER WEB LINKS FEATURES SPORTS MONEY HEALTH LIVES

Homepage / Atlanta News

# Study: Prostate Cancer Patients At Greater Risk For Colon Cancer

## Researchers Find Men With Prostate Problems Have More Colon Polyps

by Blake Clancy, CBS Atlanta Producer

POSTED: 7:43 am EDT October 20, 2010  
UPDATED: 7:52 am EDT October 20, 2010

facebook del.icio.us buzz digg reddit

» Email » Print

**ATLANTA** -- New research has found men with prostate cancer have an increased risk of developing colon cancer.

Researchers at the University of Buffalo said prostate cancer patients have significantly more colon polyps than men without prostate problems. While most polyps are benign, studies show many colon cancers begin as polyps. Men with prostate cancer are advised to be especially diligent about having routine colonoscopies.

**E-Mail News Alerts**  
Get breaking news and daily headlines.

Enter E-Mail Address

[Browse all e-mail newsletters](#)



[More](#)

Copyright 2010 by cbsatlanta.com. All rights reserved. This material may not be published, broadcast, rewritten or redistributed.



**Bibb County Ga. Deputy Shoots Pit Bull**  
New Today!



**Newlywed Husband Charged With Wife's Murder**  
1 day ago



**Cracker Barrel Beating Sentence Outrages Victim, Community**  
2 weeks ago



**Nationwide Alert Issued For Missing Morrow Teen**  
2 weeks ago



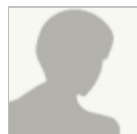
**Cancer Activist's Approach A Bit Irreverent**  
3 weeks ago



**Teen Involved In Crash With Roy Barnes Daughter Has Died**  
3 weeks ago

Powered by Vertical Acuity

The following are comments from our users. Opinions expressed are neither created nor endorsed by CBSAtlanta.com. By posting a comment you agree to accept our [Terms of Use](#). Comments are moderated by the community. To report an offensive or otherwise inappropriate comment, click the "Flag" link that appears beneath that comment. Comments that are flagged by a set number of users will be automatically removed.



Login

Your name (required)

Share

This Page