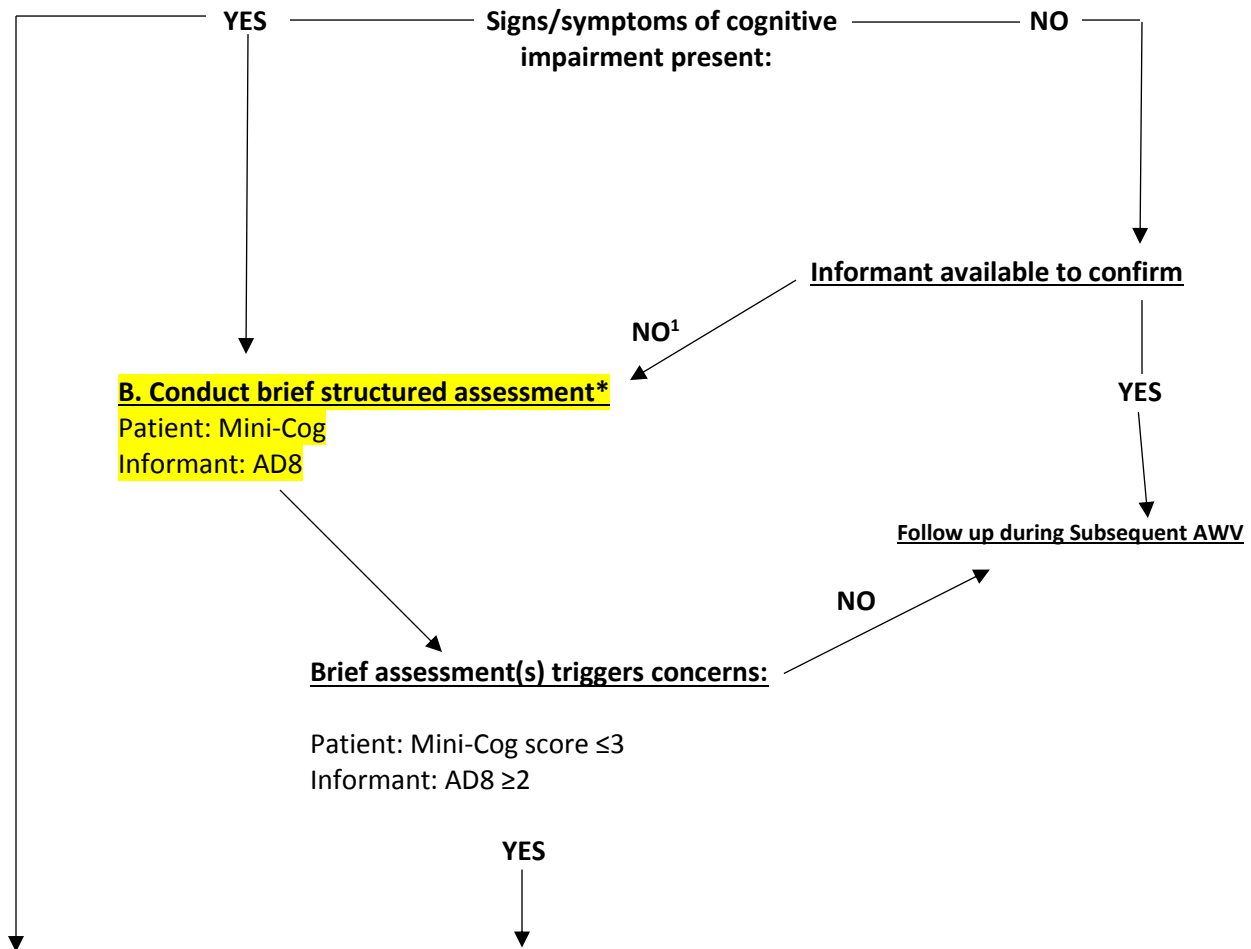




Medicare Annual Wellness Visit
(HCPCS codes **G0438** or **G0439**)

A: Review HRA (especially reports of functional deficits), clinician observations, and self-reported concerns, and query patient and, if available, informants.



C. Conduct full dementia evaluation, Diagnose and Treat
or
Refer for full dementia evaluation (Center of Excellence for Alzheimer's Disease at 716-859-7498)

(If informant is available during AWV can follow up the same day as AWV and bill for E/M service with CPT code 99201-99215. If not, schedule new visit for evaluation and request presence if family/companion to facilitate assessment)

¹ AWV= Annual Wellness Visit, HRA= Health Risk Assessment * Fig 1. Alz Asso Medicare Wellness Visit Algorithm for Assessment of Cognition