

SPECIFICATIONS

PISTON AREA:
75.60 SQ. IN. [487.7 SQ. CM.]

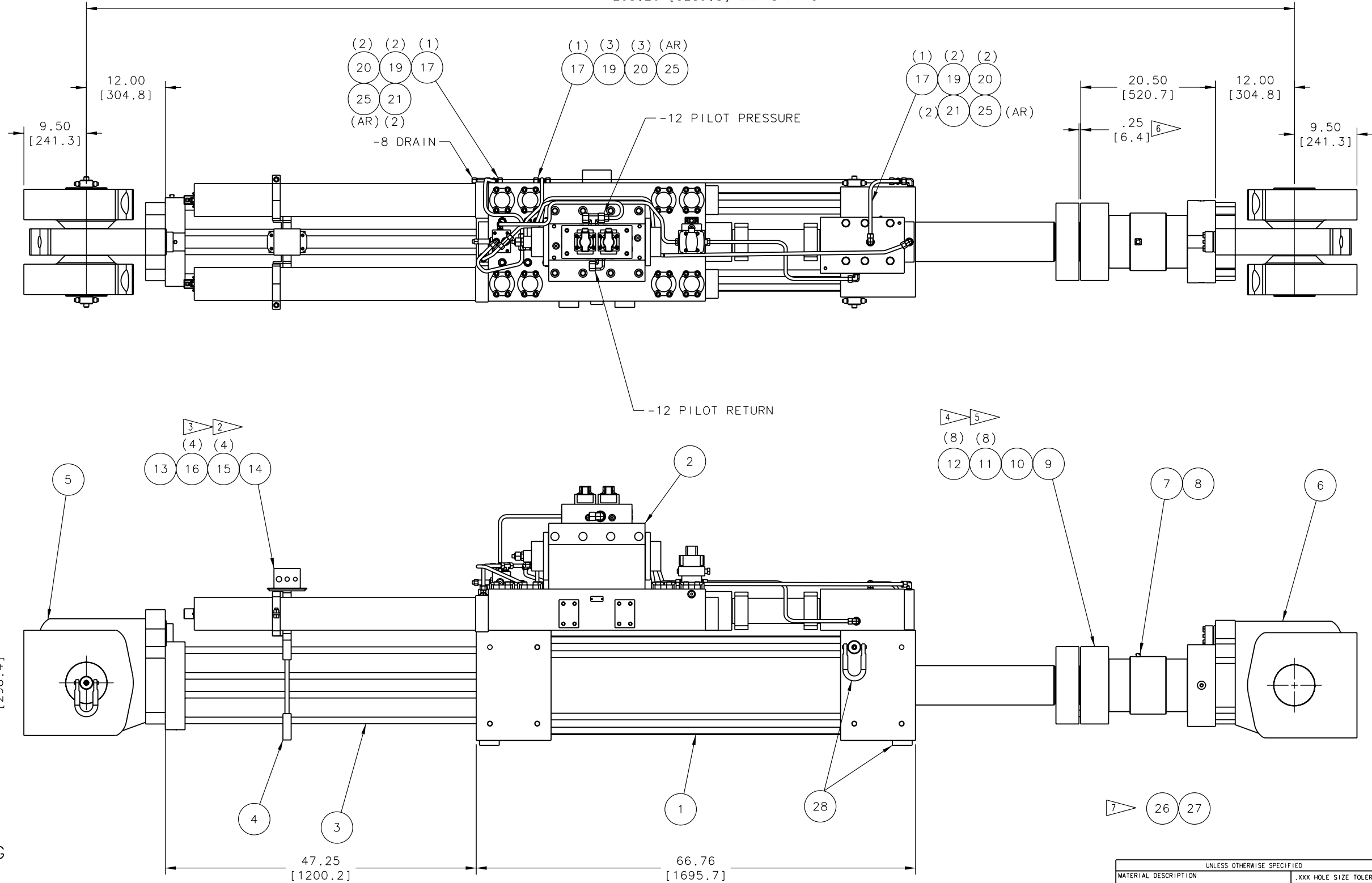
ROD DIAMETER:
6.00 [152.4]

DYNAMIC STROKE:
40.00 [1016.0]

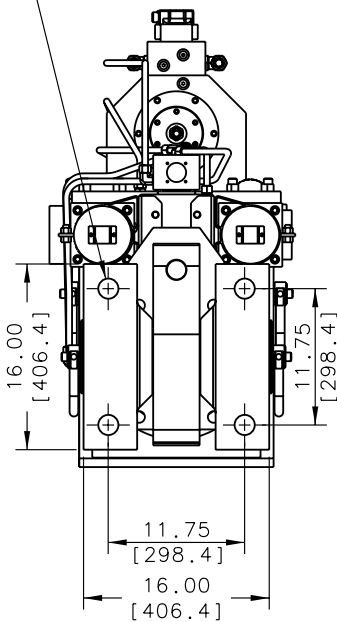
STATIC STROKE:
45.00 [1143.0]

FORCE RATING:
220 KIP [1000 KN]
AT 2800 PSI

163.26 [4146.8] MIN STATIC
165.76 [4210.3] MIN DYNAMIC
185.76 [4718.3] MID STROKE
205.76 [5226.3] MAX DYNAMIC
208.26 [5289.8] MAX STATIC



Ø1.72 [43.7] THRU (4)



SWIVEL MOUNTING

NOTES:

- 1. DIMENSIONS IN PARENTHESIS ARE IN MILLIMETERS UNLESS OTHERWISE SPECIFIED.
- 2. LUBE & TORQUE TO 3.9 LB-FT [5.3 N-M].
- 3. LUBE & TORQUE TO 9.4 LB-FT [13 N-M].

- 4. LUBE & TORQUE TO 680 LB-FT [920 N-M].
- 5. LUBE & TORQUE TO 760 LB-FT [1000 N-M].

- 6. END OF ROD TO PROTRUDE .25" PAST ADAPTER PLATE (ITEM 6) TO FACILITATE A PRELOADED CONNECTION.

- 7. CABLE CLAMPING MATERIALS AT SYSTEM LEVEL.

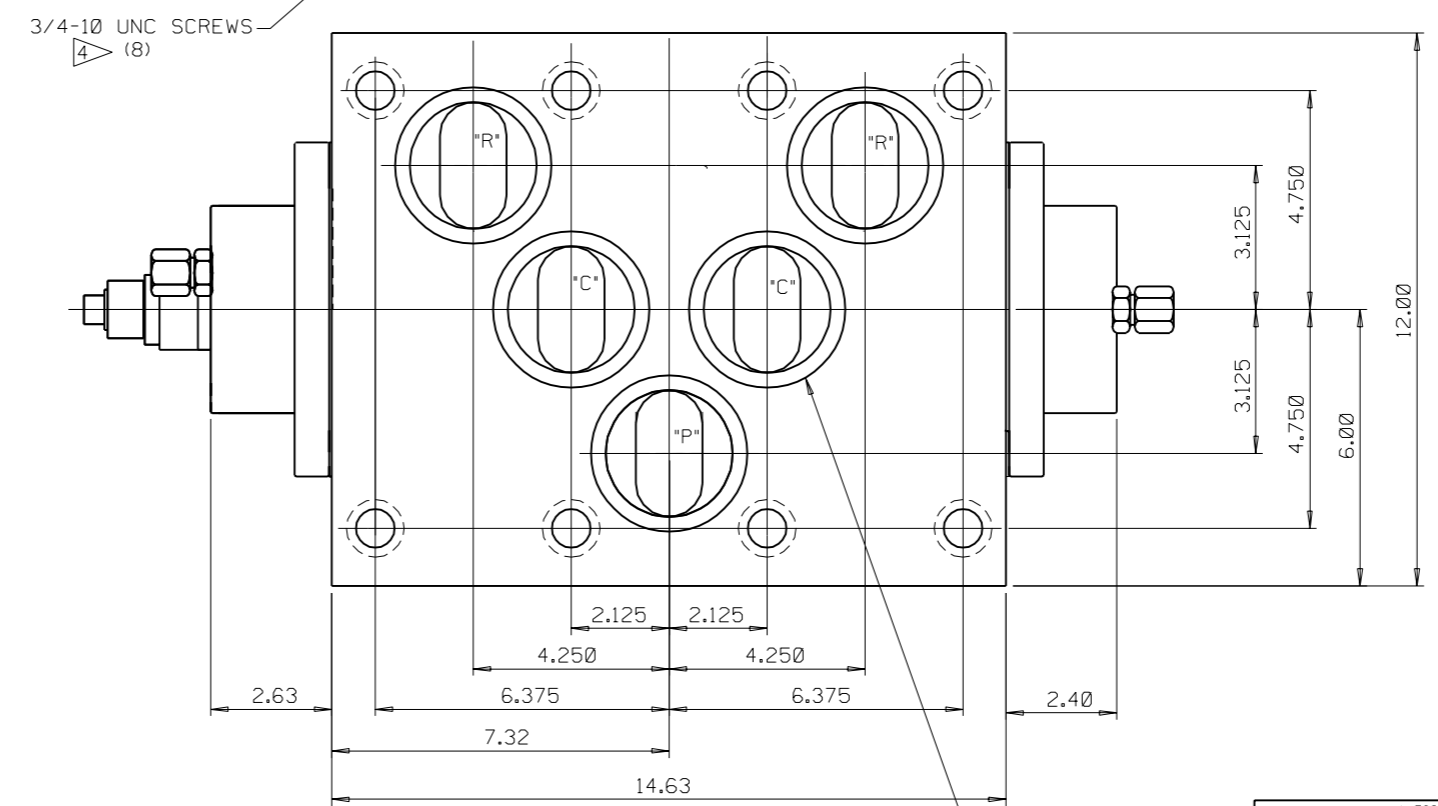
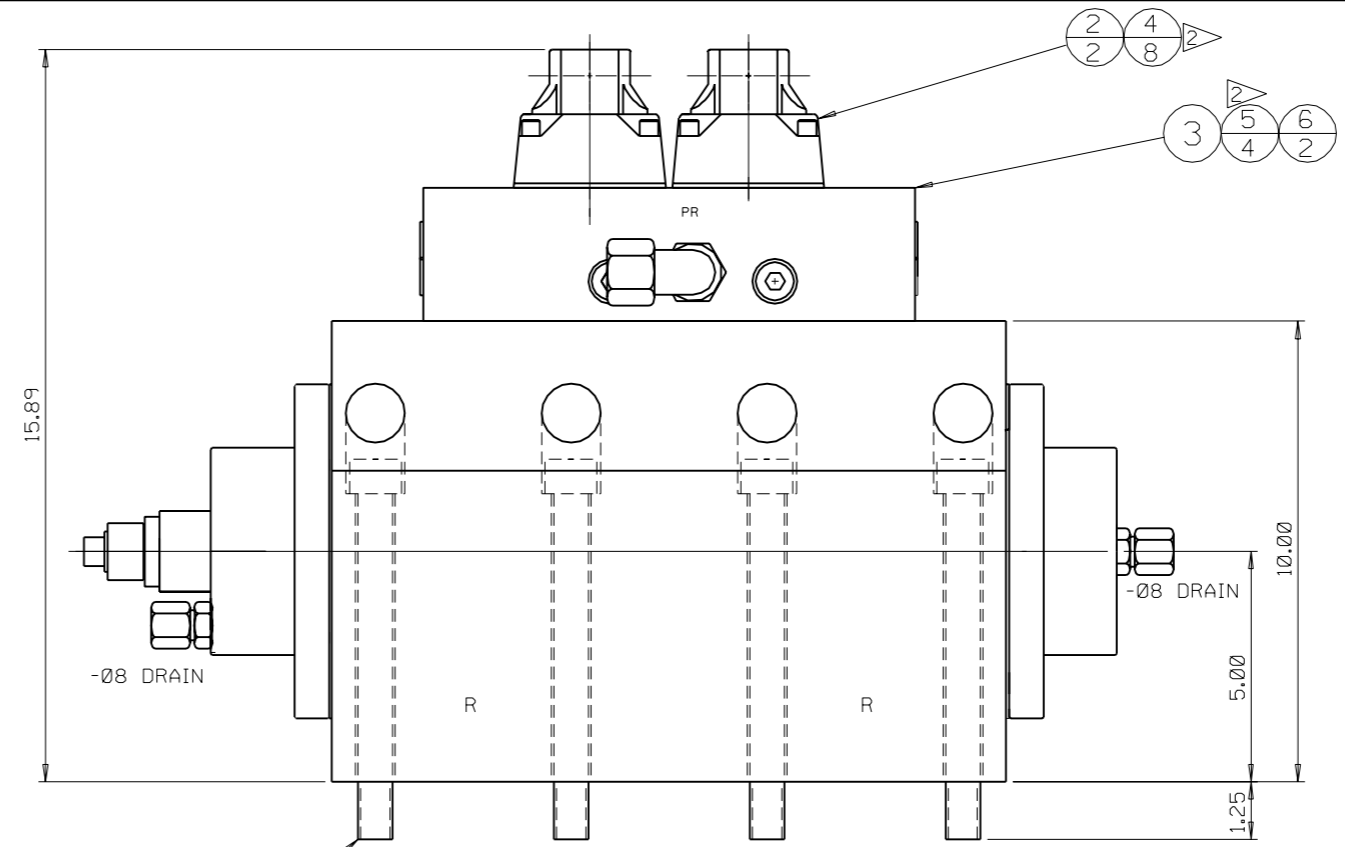
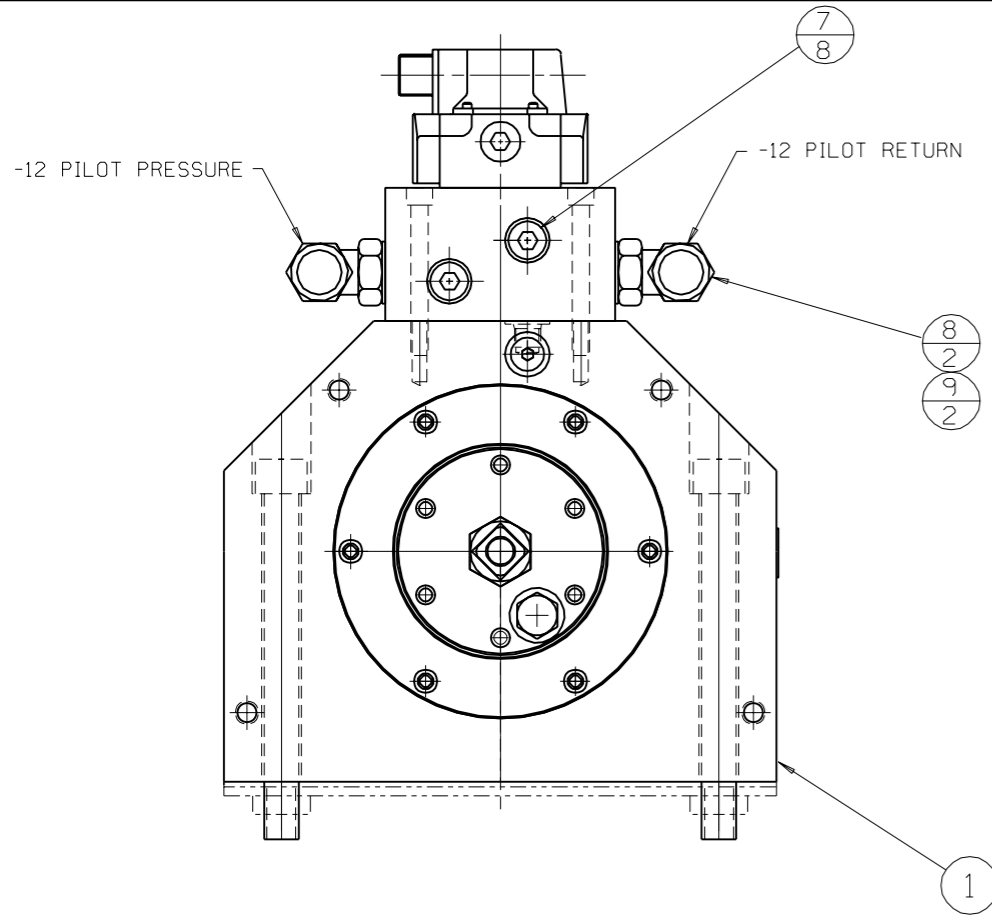
REVISIONS

DESCRIPTION			LETTER	ECN NO
DRAWN	ENGR	DATE		

SOURCE/REF
DRAWING

PROPRIETARY DATA
The information and design(s) disclosed herein are the property of MTS Systems Corporation and may not be used, reproduced or disclosed in any form except as granted in writing by MTS Systems Corporation. This restriction excludes information that is in the public domain or was legitimately in the prior possession of the recipient.

UNLESS OTHERWISE SPECIFIED			
MATERIAL DESCRIPTION	.XXX HOLE SIZE TOLERANCE	DRAWN	CHECK
-	0.000 TO .750 +.010/- .002	SLO	JCC
MATERIAL SIZE	OVER .750 TO 1.500 +.015/- .003	DATE	DATE
-		8-19-02	8-02
FINISH	ANGLE ±2°	TITLE	
-	1/4 ±1/4	ACTUATOR ASSY-244.51S, 40" STRK, 256.80 SHUTOFF	
GENERAL TOLERANCES	SCALE 1/8	NEXT LEVEL	SIZE
• THREAD DEPTHS ARE TO MIN FULL THDS	.X ±.1		NUMBER
• DRILL DEPTHS ARE TO FULL DIA	.XX ±.03		100-075-428
• REMOVE BURRS AND SHARP EDGES	.XXX ±.010	PRODUCT CODE	REV
• DO NOT SCALE PRINT		24451S	A
MTS SYSTEMS CORPORATION EDEN PRAIRIE, MINNESOTA U.S.A.	THIRD ANGLE PROJ	SHEET 1 OF 1	



2.750 DIA PORTS
(2 RETURN, 2 CONTROL & 1 PRESSURE)

- NOTES:
- ALL DIMENSIONS ARE REF ONLY.
 - LUBE & TORQUE TO 19 FT-LBS (26 N.M)
 - LUBE & TORQUE TO 34 FT-LBS (47 N.M)
 - LUBE & TORQUE TO 280 FT-LBS (380 N.M)

PART NO.	REV	MODEL NUMBER	PILOT VALVE	COMMENTS	DATE	APPVD.
-04	A	256.80S-20	252.24 (2)	3200 LPM	8-99	HC
-03	A	256.80S-20	252.24 (2)	720 GPM	8-96	HC
-02	C	256.80S-20	252.24 (2)	650 GPM	3-96	HC
519064-01	C	256.80A-20	252.24 (2)	800 GPM	3-96	HC

REVISIONS						
DESCRIPTION	DATE	LETTER	ECO NO.			
DOCUMENTATION UPDATES -01 TO B REV. -02 TO B REV.	6-96	JC	HC	RULE 1		
DOCUMENTATION UPDATES -01 TO C REV. -02 TO C REV.	6-96	JC	HC	RULE 1		

SOURCE/REF. DRAWING:

PROPRIETARY DATA

The information and designs disclosed herein are the property of MTS Systems Corporation and may not be used, reproduced or disclosed in any form except as granted in writing by MTS Systems Corporation. This restriction excludes information that is in the public domain or was legitimately in the prior possession of the recipient.

UNLESS OTHERWISE SPECIFIED				DRAWN				CHECK				ENGR				MFG			
MATERIAL DESCRIPTION SEE PARTS LIST				.XXX HOLE SIZE TOLERANCE				DATE				DATE				DATE			
MATERIAL SIZE				0.000 TO .750 +.010/-0.002				3-96				DATE				DATE			
FINISH NONE				SCALE 1/2				TITLE SERVOVALVE ASSY-256.80				DATE				DATE			
GENERAL TOLERANCES				MACHINED SURFACES				NEXT LEVEL				SIZE				NUMBER			
.XXX ±.03				.XX ±.01				D				256.80				519064-XX			
THRO ANGLE PROJ.				PRODUCT CODE				SHEET				REV				SEE TAB			
256.80				256.80				1				1				1			