

How to Become an iSEED Scholar



Prospective PhD scholars interested in becoming an iSEED Graduate scholar should apply to one of the seven participating schools at UB. Follow the instructions for applying to the graduate program of your choice, by visiting their websites. When discussing your career goals in your personal statement, mention your interest in and reasons for becoming an iSEED scholar.

Summer stipends are available for talented undergraduate students with the opportunity to participate in research activities at UB. Students will be exposed to graduate and professional school opportunities offered at UB. *iSEED summer scholars* interested in undergraduate research experiences are welcome to apply online at www.buffalo.edu/iseed.

“The program was amazing! I had a fantastic time and learned an enormous amount! Thank you so much for providing the opportunity for students like myself to come and participate in it!”

-iSEED Summer Scholar



iSEED Co-Directors

Chairs of Executive Committee

Margarita L. Dubocovich, PhD

Luis A. Colón, PhD

iSEED Steering Committee

Chair: Rajendram V. Rajnarayanan, PhD

Co-Chair: Jennifer Zirnheld, PhD

iSEED Staff

Jackie Baum, Coordinator

Contact Us:

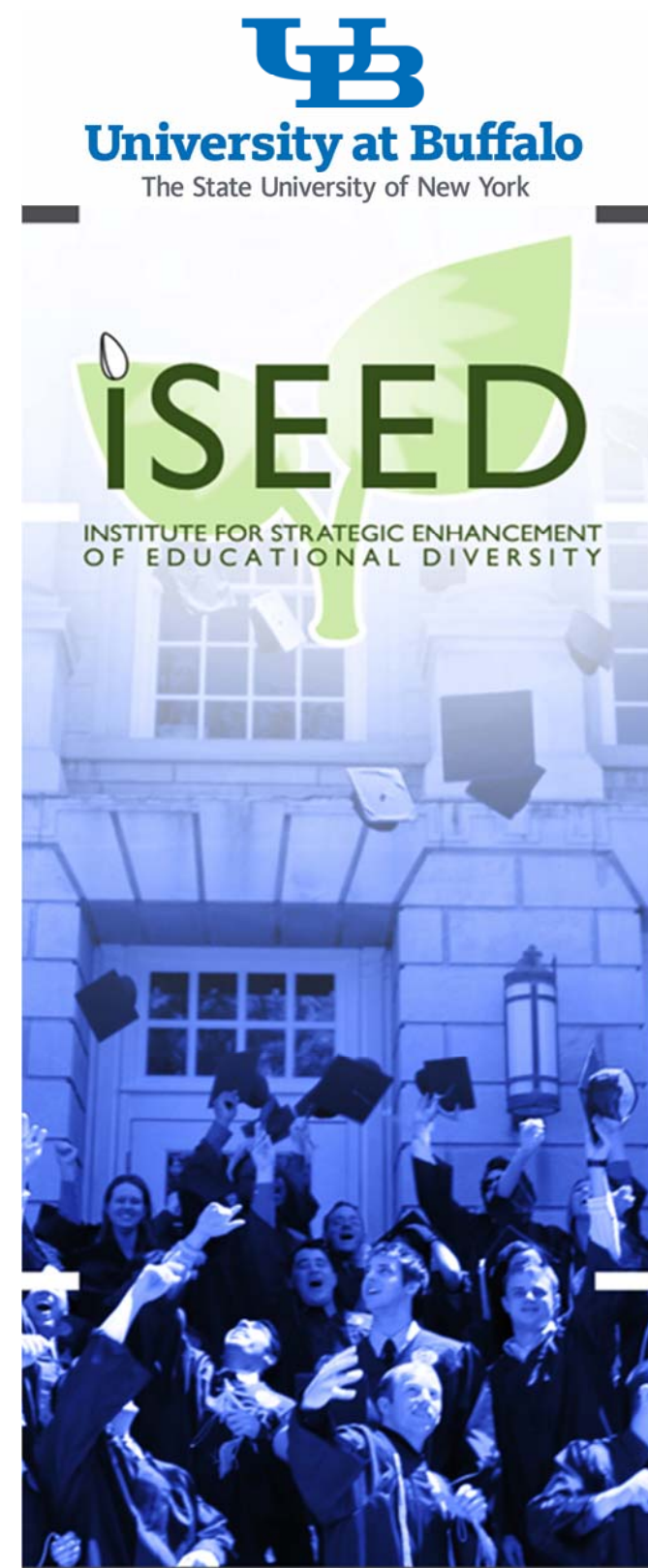
Phone: (716) 829-3543

iseed@buffalo.edu

Visit us online:

www.buffalo.edu/iseed

*The iSEED was funded by a 3E Fund through the
Office of the Provost.*



Participating Schools

College of Arts and Sciences
www.cas.buffalo.edu

School of Dental Medicine
www.dental.buffalo.edu

School of Engineering and
Applied Sciences
www.engineering.buffalo.edu

Jacobs School of Medicine and
Biomedical Sciences
www.medicine.buffalo.edu

School of Nursing
www.nursing.buffalo.edu

School of Pharmacy and
Pharmaceutical Sciences
www.pharmacy.buffalo.edu

School of Public Health and
Health Professions
www.sphhp.buffalo.edu

iSEED Summer Research Experience

The iSEED Summer Research Experience is an excellent opportunity for undergraduates to gain research and lab experience. Students are matched with a participating faculty member whose interests are complementary to their own. Students work on a research project and gain hands-on experience during the 10-week program.

What is the iSEED?

A university-wide institute, the iSEED promotes building a **culturally** and **intellectually** diverse and **academically** inclusive community of graduate students, postdoctoral fellows, faculty and staff.

The iSEED is focused on **excellence** in education, **engagement** in research, **mentoring** and **enhancement** of professional development central to the UB mission.

iSEED Faculty

The iSEED will attract and build an excellent and diverse faculty body to provide meaningful mentoring and guide a community of students and postdoctoral fellows towards successful careers.

iSEED Graduate Scholars Program

Competitive funding will be offered to a select number of exceptional first year PhD students, who would enrich UB's educational benefits by enhancing diversity and bringing new and alternative perspectives to accelerate discovery in all disciplines.

Building a UB Community

The iSEED is committed to building an inclusive community of excellent faculty, postdocs, and students. The iSEED will facilitate participation in premier national conferences, school visits by teams of scientists and professional scholars, and from UB pipeline programs (ex. CLIMB UP, McNair, CSTEP, and LSAMP).

Partner Schools

School of Architecture & Planning
www.ap.buffalo.edu

Graduate School of Education
www.gse.buffalo.edu

Law School
www.law.buffalo.edu

School of Management
www.mgt.buffalo.edu

Roswell Park Cancer Institute
www.roswellpark.edu

School of Social Work
www.socialwork.buffalo.edu

Professional Development Catalyst Series

Required for all iSEED scholars, students will participate in workshops to develop professional skills, such as writing, public speaking, grant and award preparation, leadership engagement among others to help them become successful scientists.

iSEED Mentoring

The iSEED will encourage evidence-based mentoring practices so that students receive the necessary mentoring to develop essential career skills. Positive mentoring experiences will increase persistence in research, career satisfaction, and productivity.